

# Premium POS Industry

People are always going to go shopping. A lot of our effort is just how we make the retail experience a great one!



40K

## Germany

The first market to launch this project.

2.5K

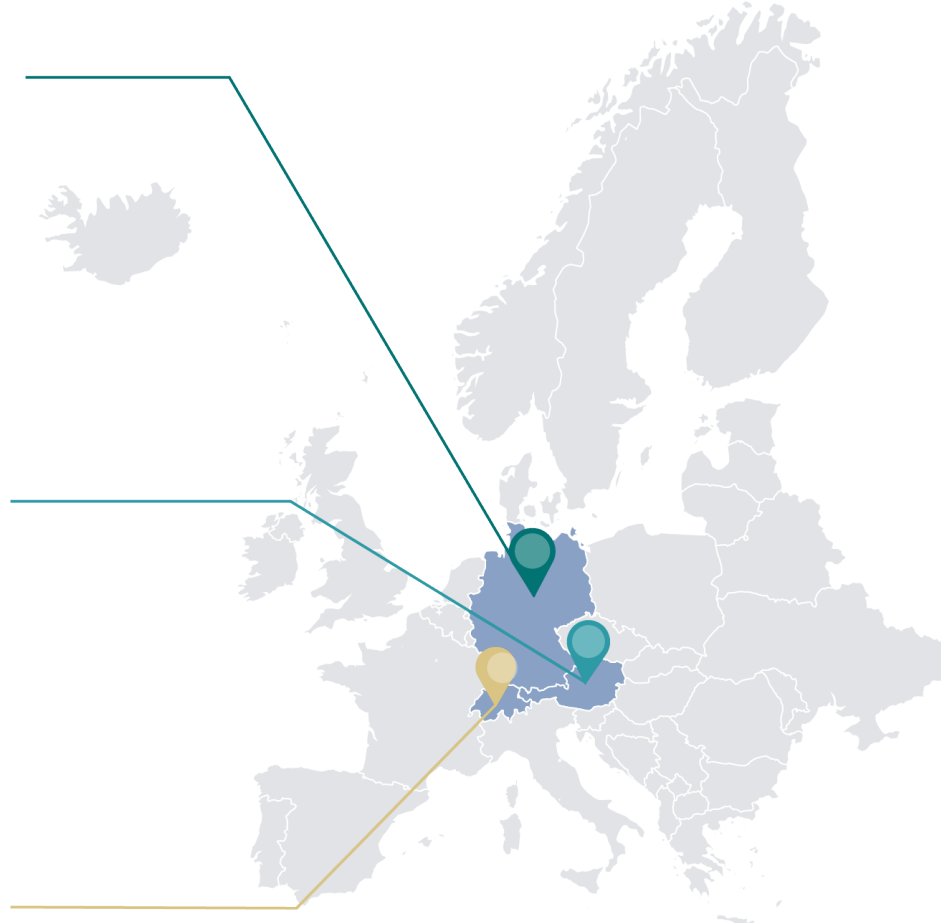
## Austria

Parallel development of adjusted and specific units for this market.

2K

## Switzerland

Several different options due to very diverse retail environment



# BAT Multibox Project

## Illuminating Innovations

Experience our exceptional unit production for three diverse markets this spring. With comprehensive project management, we handle every aspect, from site survey to development, production, delivery, and installation training. Join us as we redefine excellence.

# The Frame

Designed with convenience in mind, we've produced and shipped all the components required for easy in-store assembly. The displays feature an elegant outer frame with vibrant RGB lights, seamlessly integrated side and bottom panels and a modular communication area for adaptability.





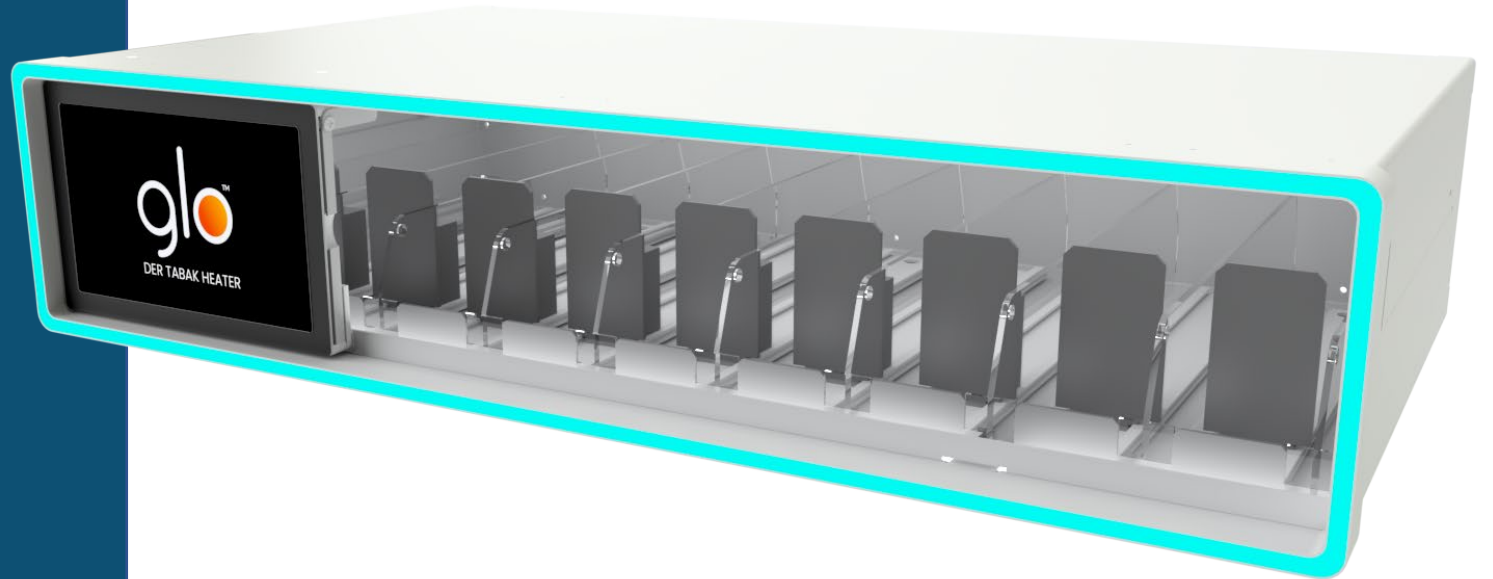
## Open box

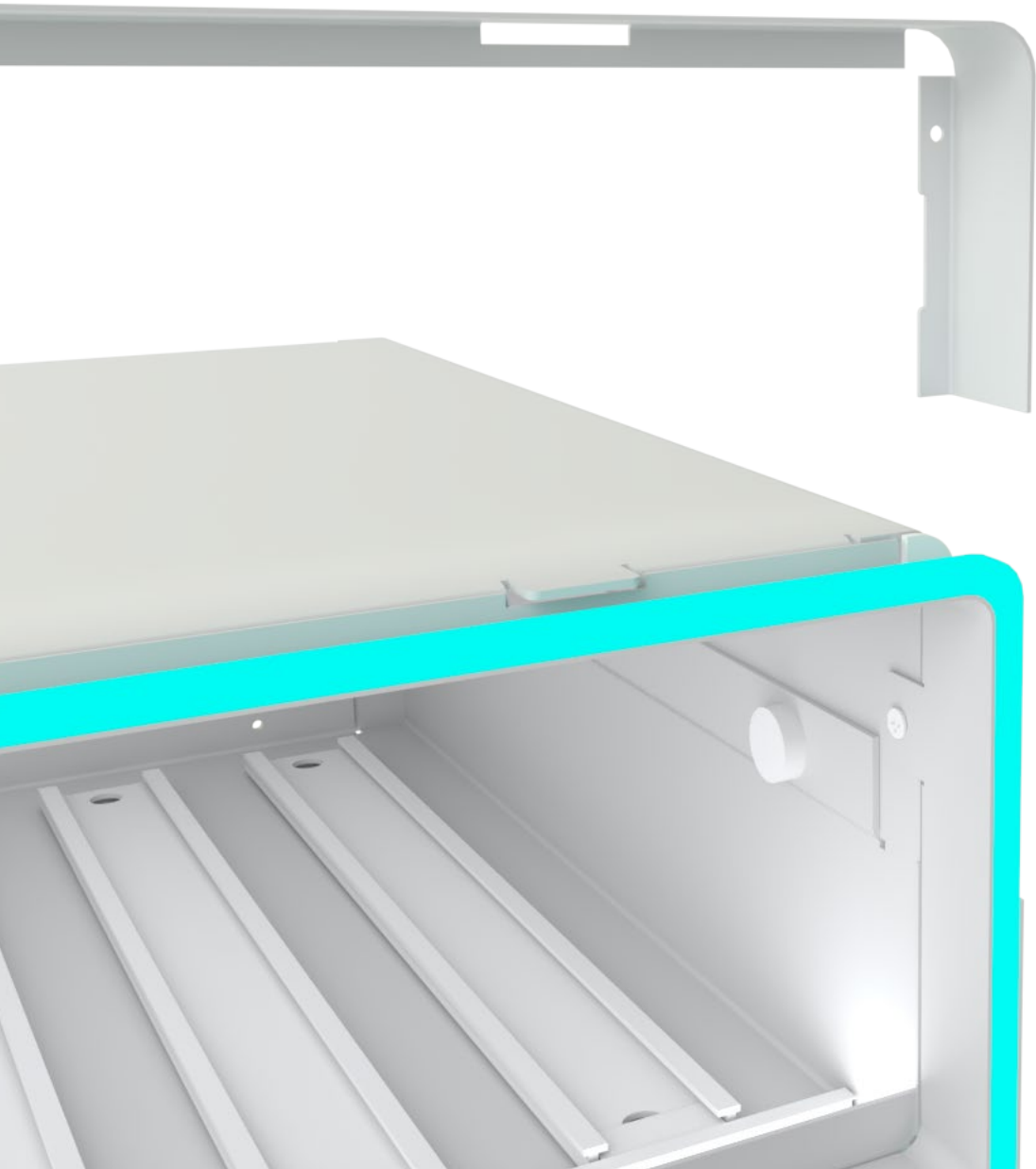
This sleek design is modular and low profile. It fits the tightest spaces on the existing shelves without the need to be assembled in stores. Comes fully assembled in a box and ready for quick and easy installation. The display can be fully RGB illuminated.

# Fully Enclosed

Like the previous version the display comes preassembled in a box and is quick and easy to install in stores.

With its sleek design it can be fitted on top of open shelves or counters. It features full RGB lighting and illuminated packs.





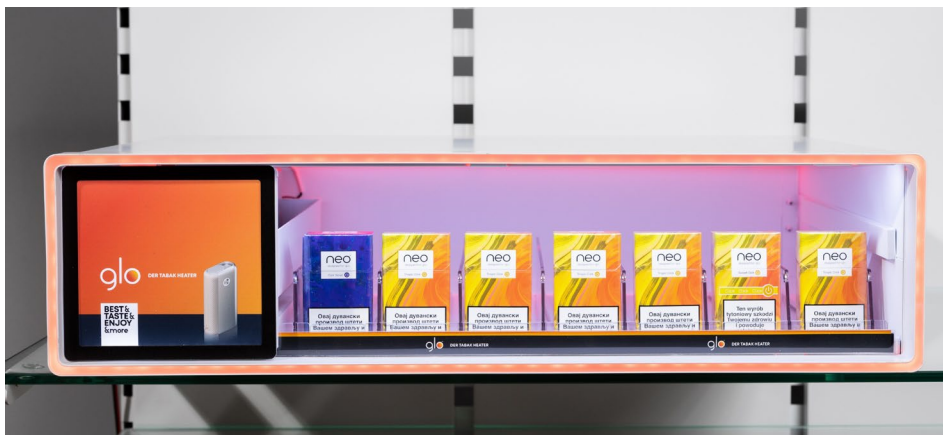
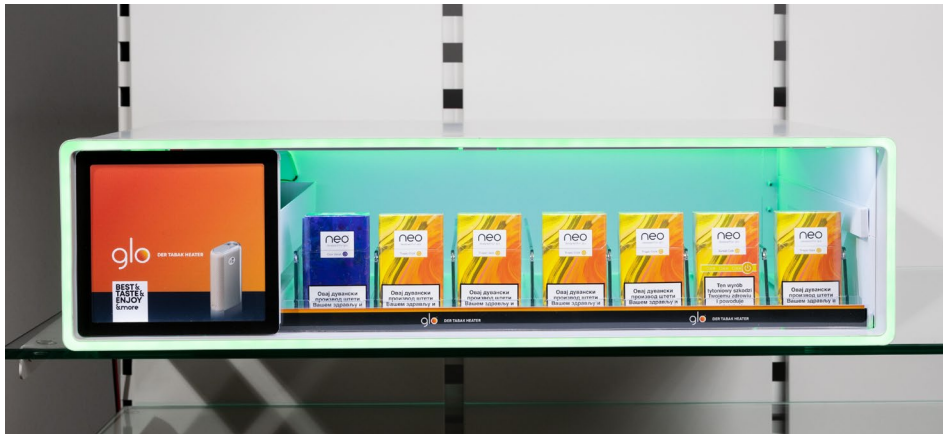
# Metal as Primary Material

-30% Reduction in CO<sub>2</sub> compared to using plastic materials.

Metal is the only material that can guarantee premium look and durability for required period of 5+ years.

Metal is also very resistant to any potential heat emission from LED lights and does not change structurally in any way, unlike plastics or similar materials.

Most importantly (as stated above) best option from sustainability point of view.



# Illuminated RGB Background

RGB LEDs densely arranged from the back of the display gives full background visual experience while keeping the energy consumption on low level.



## RGB Frame

- Easy to replace as a spare part.

RGB frame with lockable controller and  
Up to twenty different colours tailored for  
You.

Frame that can be easily replaced for  
maintenance. It only takes three screws  
and less than two minutes to completely  
remove and install a spare frame.

# Versatile and Modular Drawer

-Easy to remove.

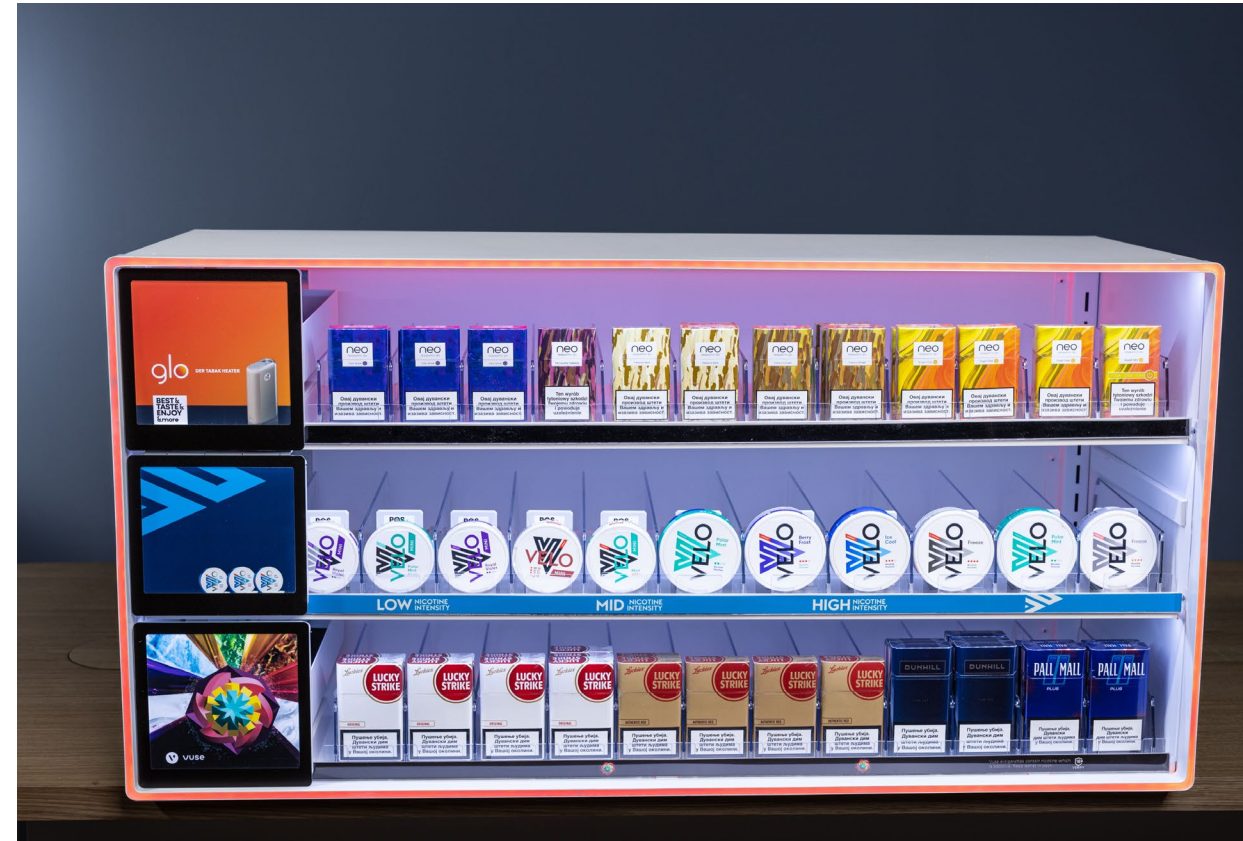
Drawers are back illuminate with printed and easy to swap visuals that stand out.

Drawers are attached by magnets that allow you to remove them easily and to transform the display by simply adding more pushers.



# Illuminated packs

More LEDs densely arranged makes for a better product lighting, while keeping the energy consumption on low level.









glo  
THE TARIK HEATER  
BEST TASTE & ENJOY & more

neo  
Rauchen ist tödlich  
One cigarette is deadly.  
Rauchen ist tödlich.  
One cigarette is deadly.  
Rauchen ist tödlich.  
One cigarette is deadly.  
Rauchen ist tödlich.  
One cigarette is deadly.  
Rauchen ist tödlich.  
One cigarette is deadly.  
Rauchen ist tödlich.  
One cigarette is deadly.

VELO  
Berry Frost  
Peach  
Peach Frost

VELO  
LOW NICOTINE INTENSITY  
MID NICOTINE INTENSITY  
HIGH NICOTINE INTENSITY

VELO  
Berry Frost  
Peach  
Peach Frost

VELO  
LOW NICOTINE INTENSITY  
MID NICOTINE INTENSITY  
HIGH NICOTINE INTENSITY

vuse

ALL MALL  
DURKILL  
LUCKY STRIKE  
LUCKY STRIKE  
LUCKY STRIKE  
LUCKY STRIKE  
LUCKY STRIKE





# More planet Less waste.

## Re-Use:

Designing versatile and easily adaptable displays with longer life and use with any future products.

## Re-Duce:

By always investing in cutting edge technology, we significantly reduce scrap and improve efficiency.

## Re-Cycle:

Engineering displays that can be easily disassembled and recycled. Always ensuring to use sustainable materials.

## Re-Peat:

Plant new trees and create eco projects for our community and give back to the environment.





# Thank You.

[www.bgreklam.com](http://www.bgreklam.com)

## **BG REKLAM**

PRODUCTION  
29. Novembra 1M  
11460 Belgrade, Serbia

[info@bgreklam.com](mailto:info@bgreklam.com)  
+381 11 785 64 64  
+381 60 68 69 110

## **BG REKLAM GMBH**

Leverkusenstraße 3  
22761 Hamburg, Deutschland

[hamburg@bgreklam.com](mailto:hamburg@bgreklam.com)  
+49 40 85413003

## **BG REKLAM**

UK LTD  
2588 Davenport House,  
207 Regent St  
London, W1B 3HH, UK

+44 75 4288 2312