



**PREMIUM
POS
INDUSTRY**

PMI COU rebreanding



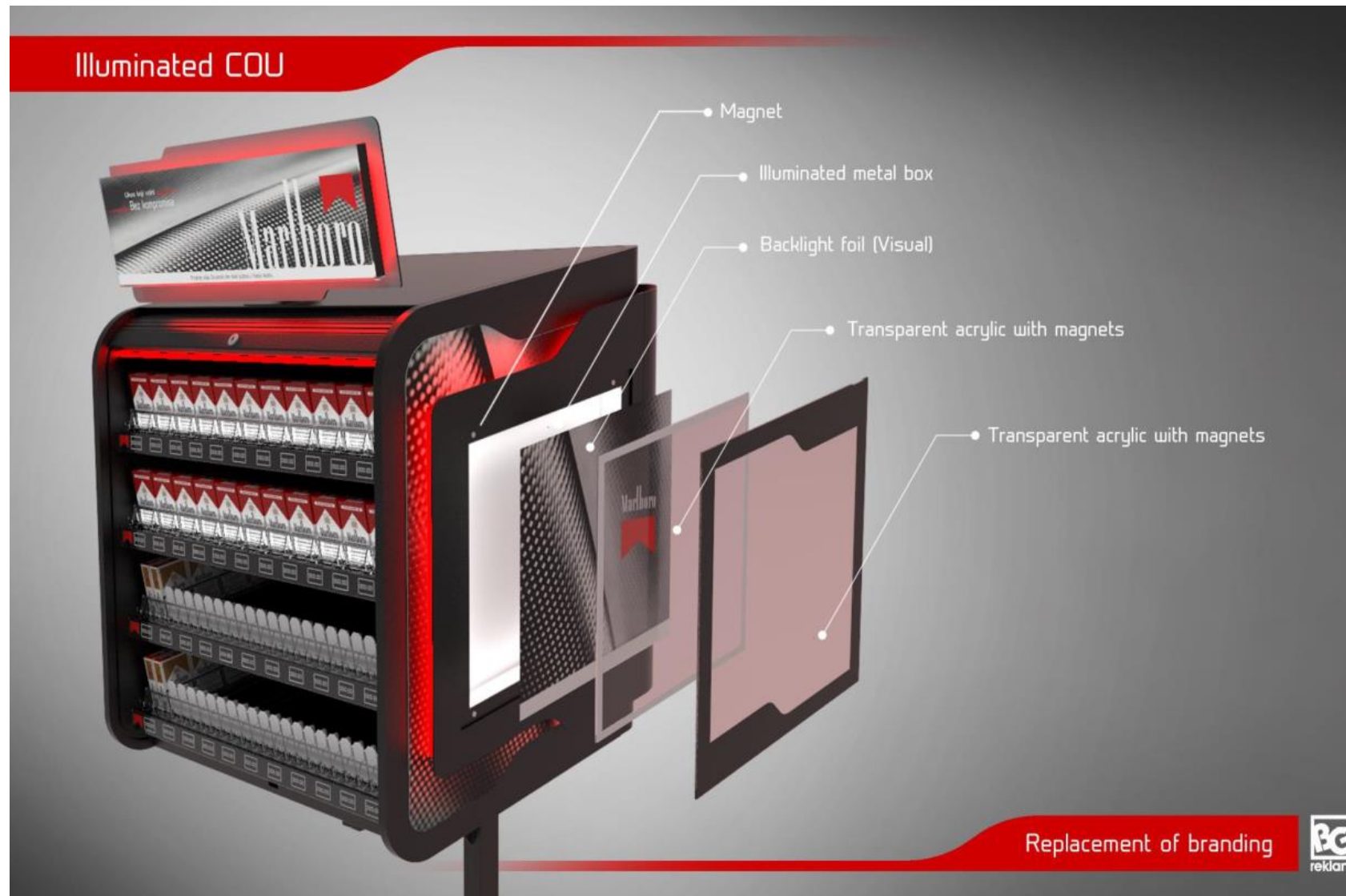
PMI COU rebreanding



PMI COU rebrending



PMTKP Macedonia COU



Overhead units



Powder coated heavy duty sheet metal casing

Illuminated crystal box

Back-light foil (visual)

Transparent acrylic with magnets

Aluminium sides

Lead time:	4 weeks for 200 pcs
Quantity:	200 + 600 pcs
Countries:	Serbia, Bulgaria, Czech Republic
Description:	Premium OHD unit and Resized Unit

Product in store



Product in store



Overhead units



Cash trays



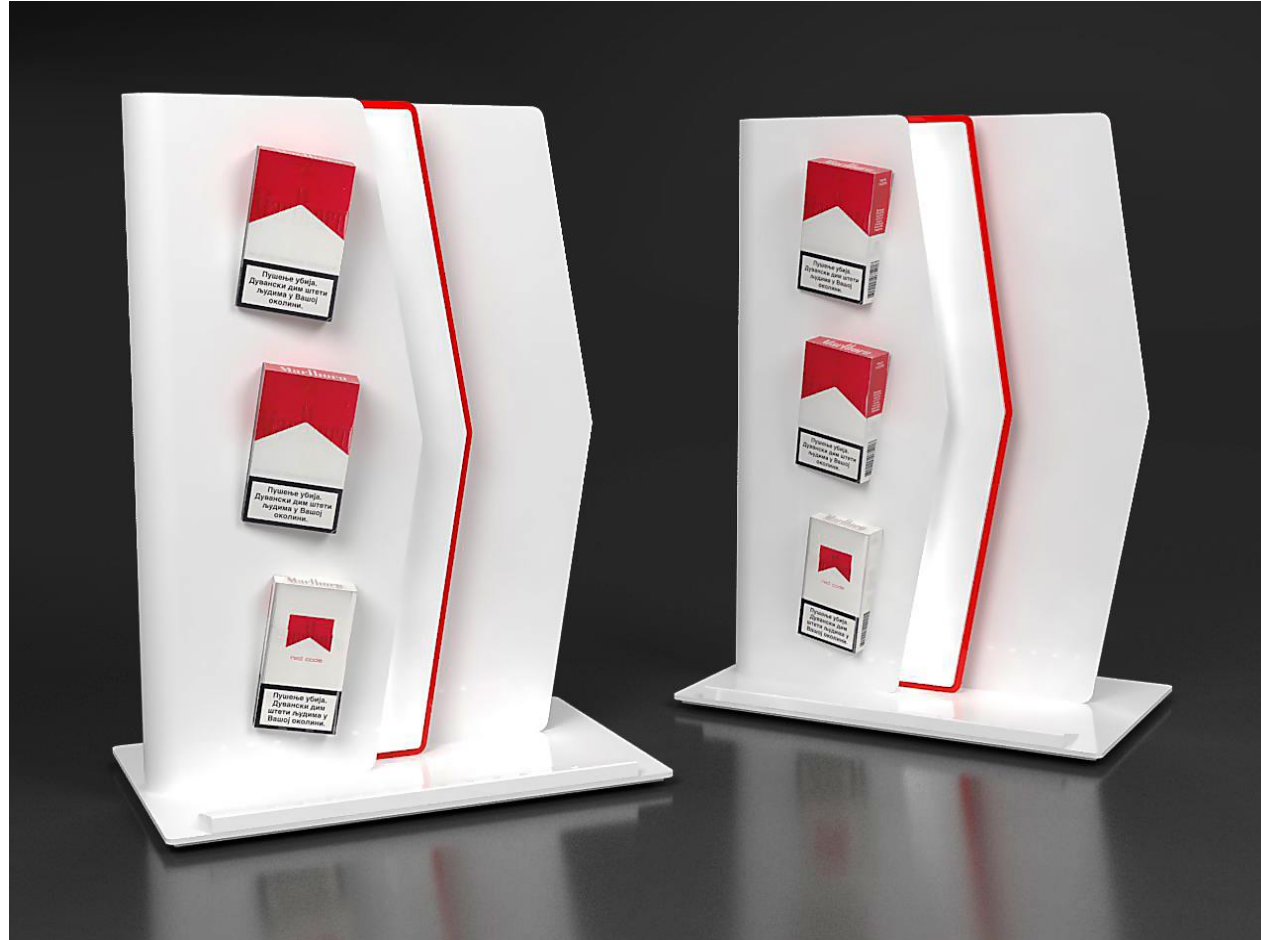
Modulex Unit for kiosk



Modulex Unit for kiosk



BG reklam for PMI



BG reklam for PMI



BG reklam for PMI



Basic Modular Unit

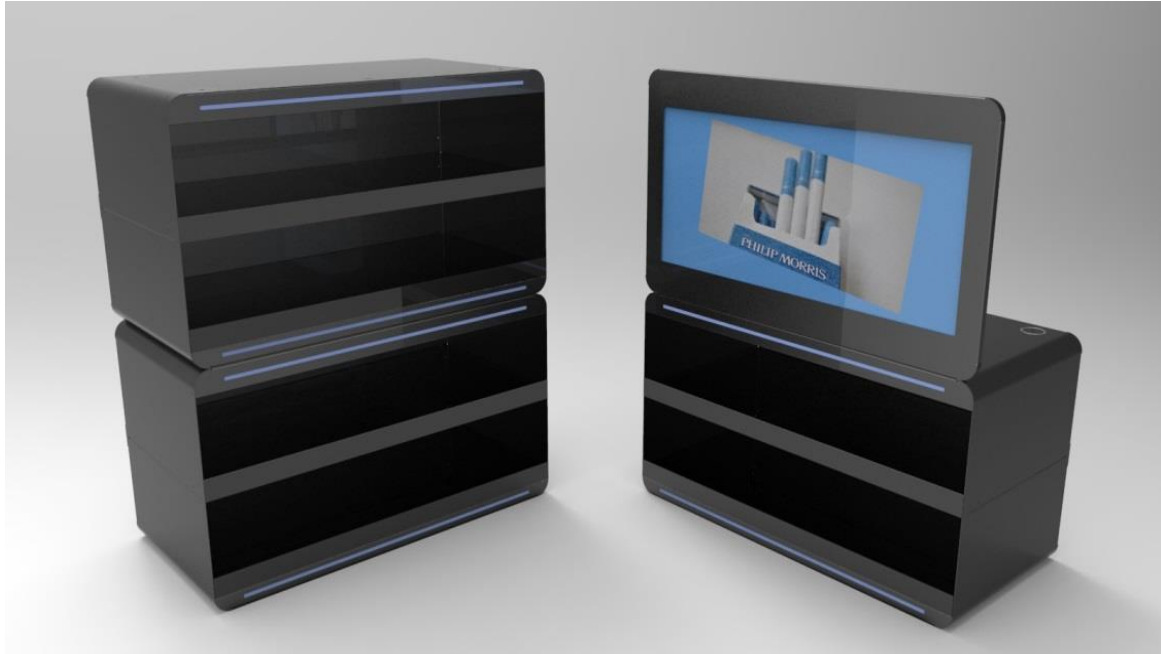


Basic Modular Unit

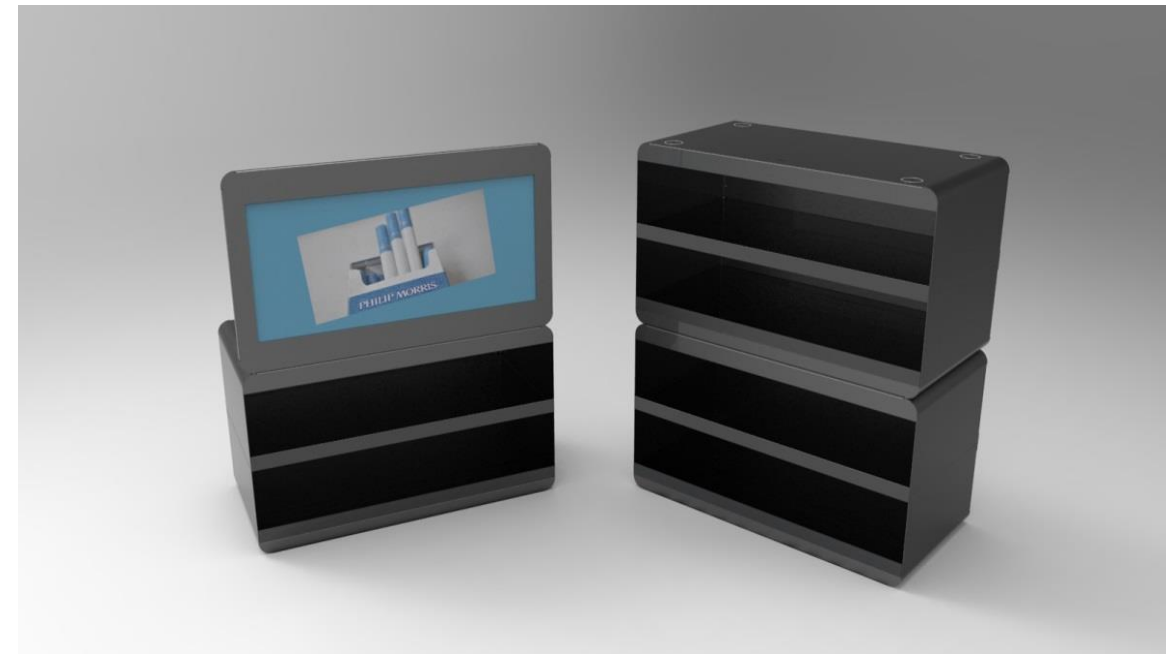
74 €/per module without
light with pushers and
dividers



Basic Modular Unit



With pushers and dividers
with LED light
123,96 €/per module with
topper



74 €/per module without
light with pushers and
dividers







E-cigarettes display



E-cigarettes display



E-cigarettes display VON ERL.



Clooney 1 HES



Clooney 2



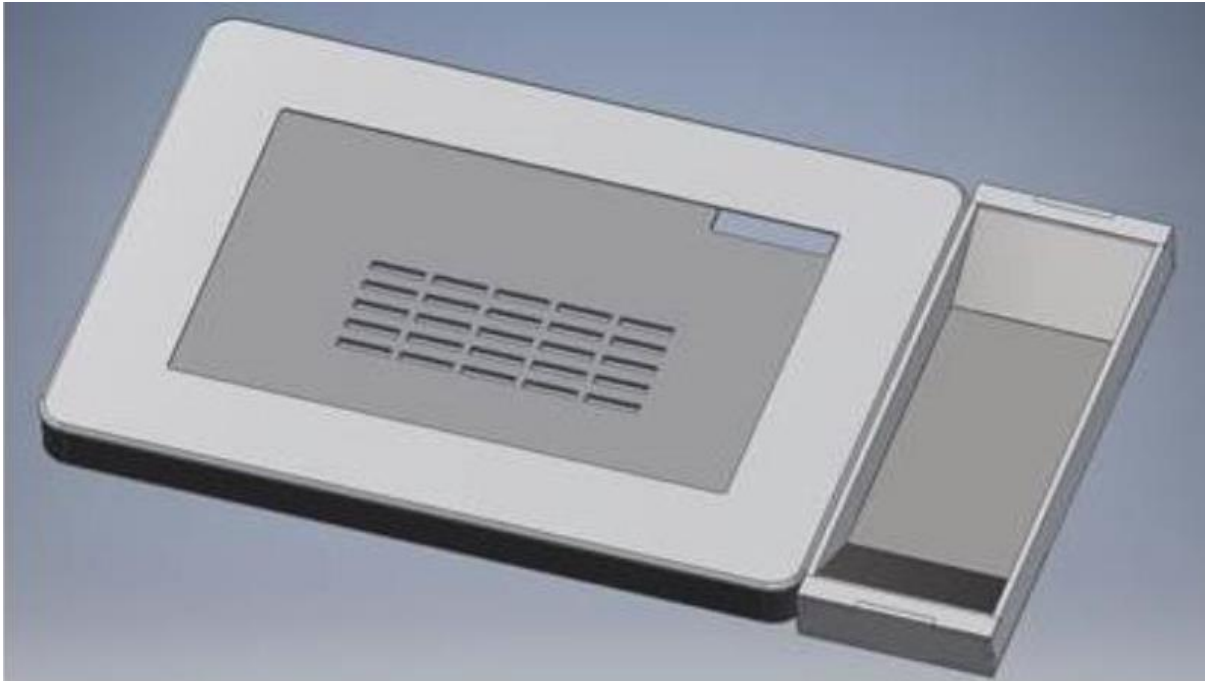
JET Lockable On Counter Display with Storage



Tang Screen Module



Cash Tray mit Mulde + Cash Tray



Shelf Highlighter



GLO Quattro



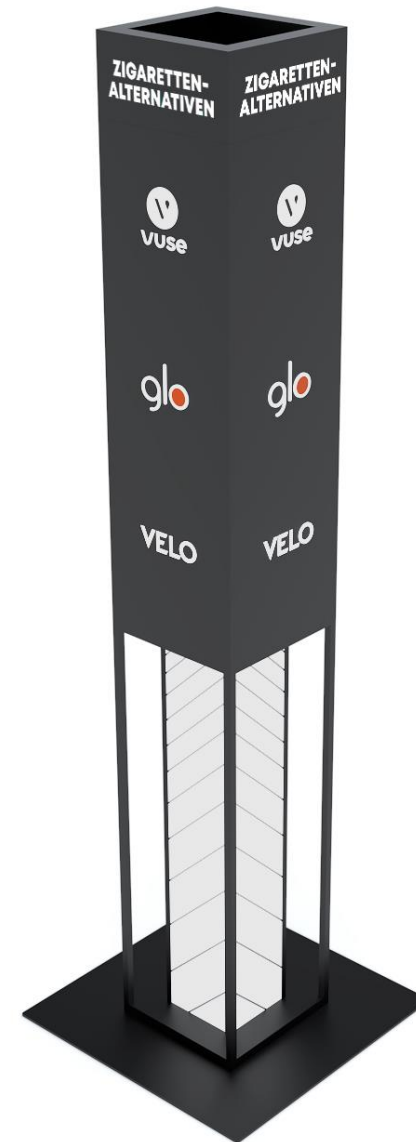
Presenterbox



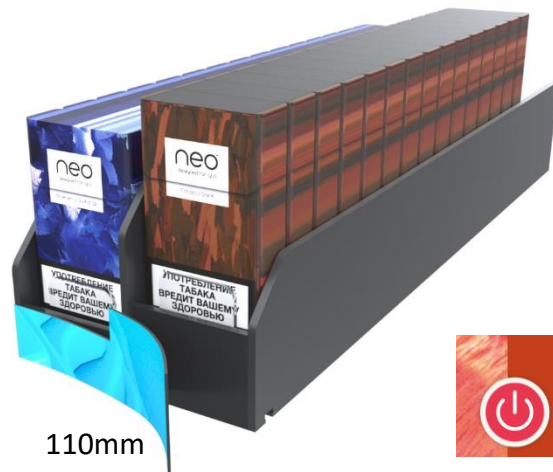
Rocky & Rocky NEO



FSU Adonis - NEW



Glo ARAL Highlighter

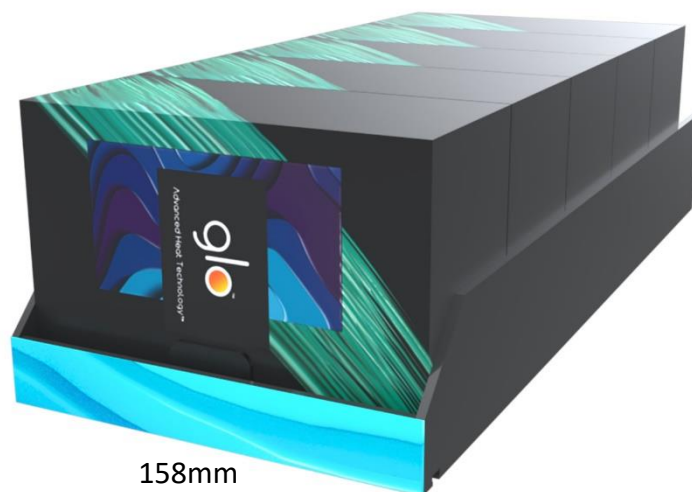


110mm

Basiselement – Neo „Treppe“

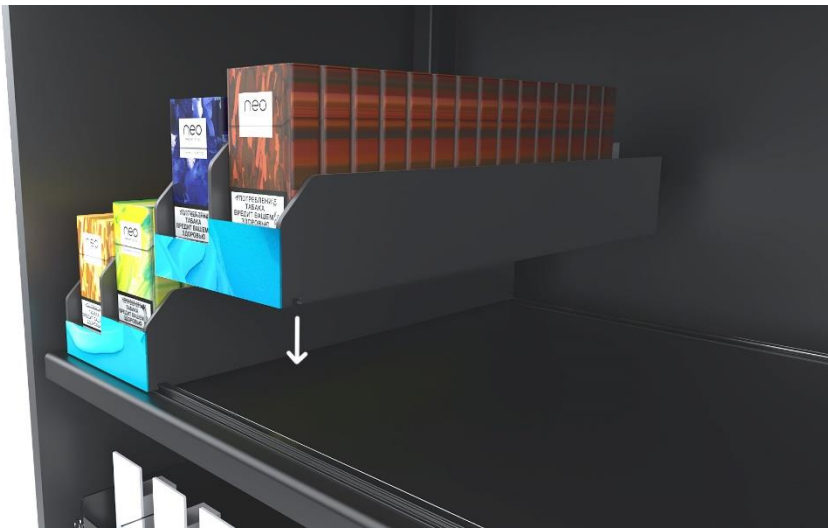


Possibility to use various printed front communication for navigating between tastes

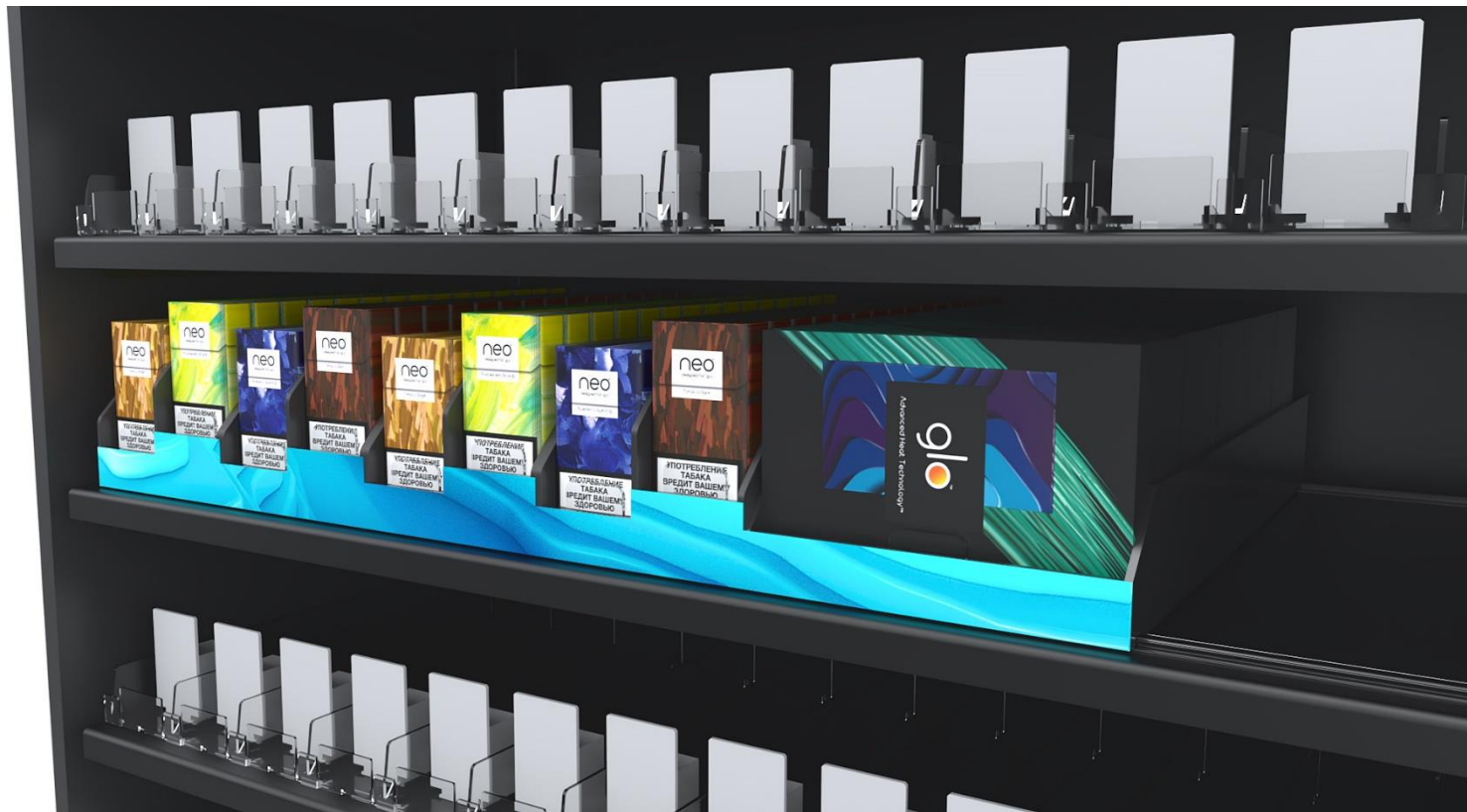


158mm

Basiselement – Device Slot



Docking in Shelf



600mm Layout with device

Small On Counter Tasting Unit



Modular variations



Modular variations



Glo-Round Counter Unit



Premium BGR Industry



Premium BGR Industry



Premium BGR Industry

Vype Vitrine FREE STANDING UNIT

- Tempered glass top
- Tasting area, illuminated
- Extendible drawer with guide rails
- Tempered glass doors (lockable)
- Illuminated logo
- Illuminated shelves



Vype Vitrine FREE STANDING UNIT

- Tempered glass top
- Tasting area, illuminated
- Extendible drawer with guide rails
- Tempered glass doors (lockable)
- Illuminated logo
- Illuminated shelves



Modular variations



Modular variations



Modular variations



Modular variations



Modular variatio



IN-STORE VIEW

Modular variations



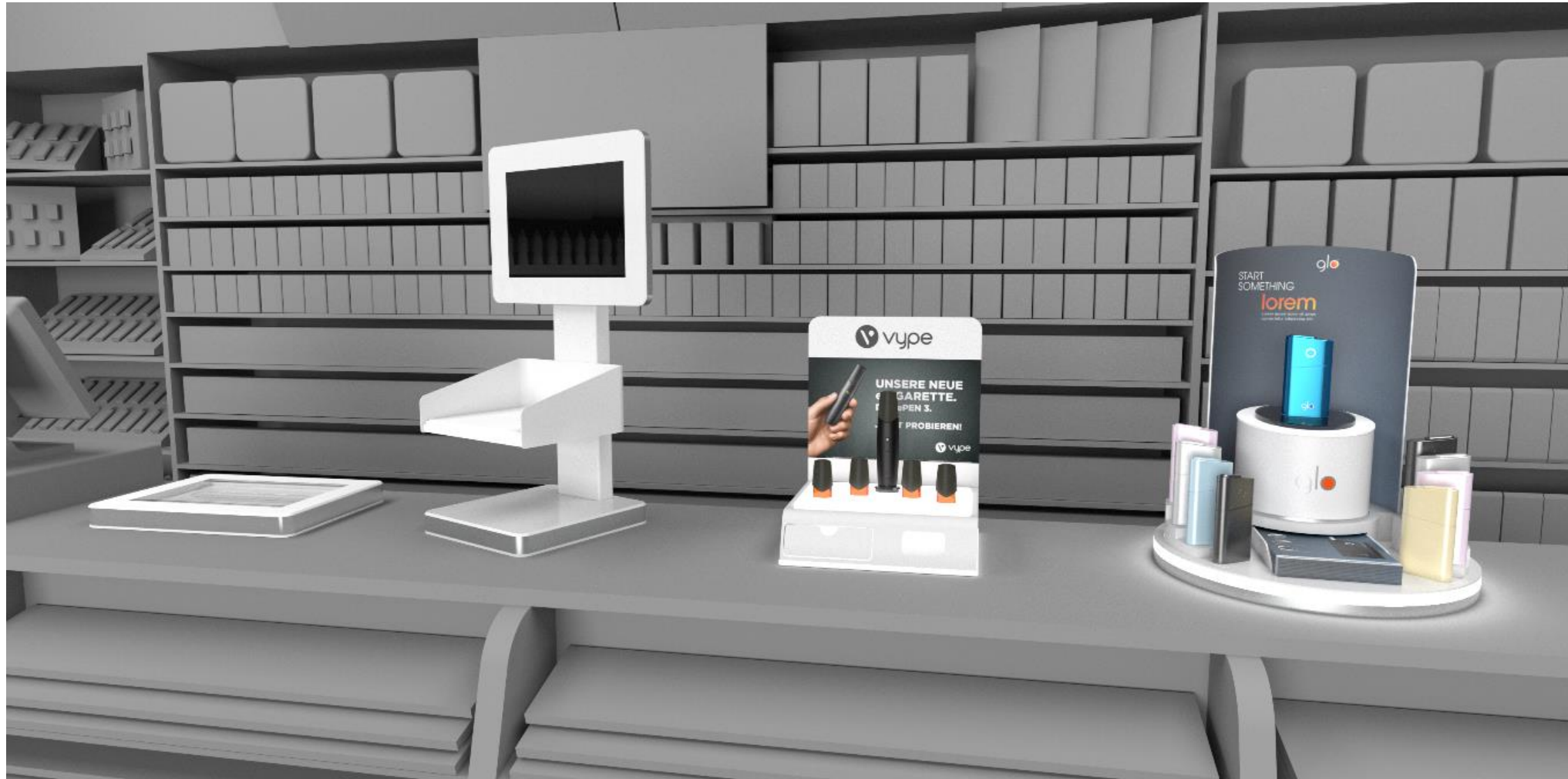
IN-STORE VIEW

Modular variations



GLO COUNTER DISPLAY

Modular variations



GLO COUNTER DISPLAY

Modular variations



**THANK
YOU**